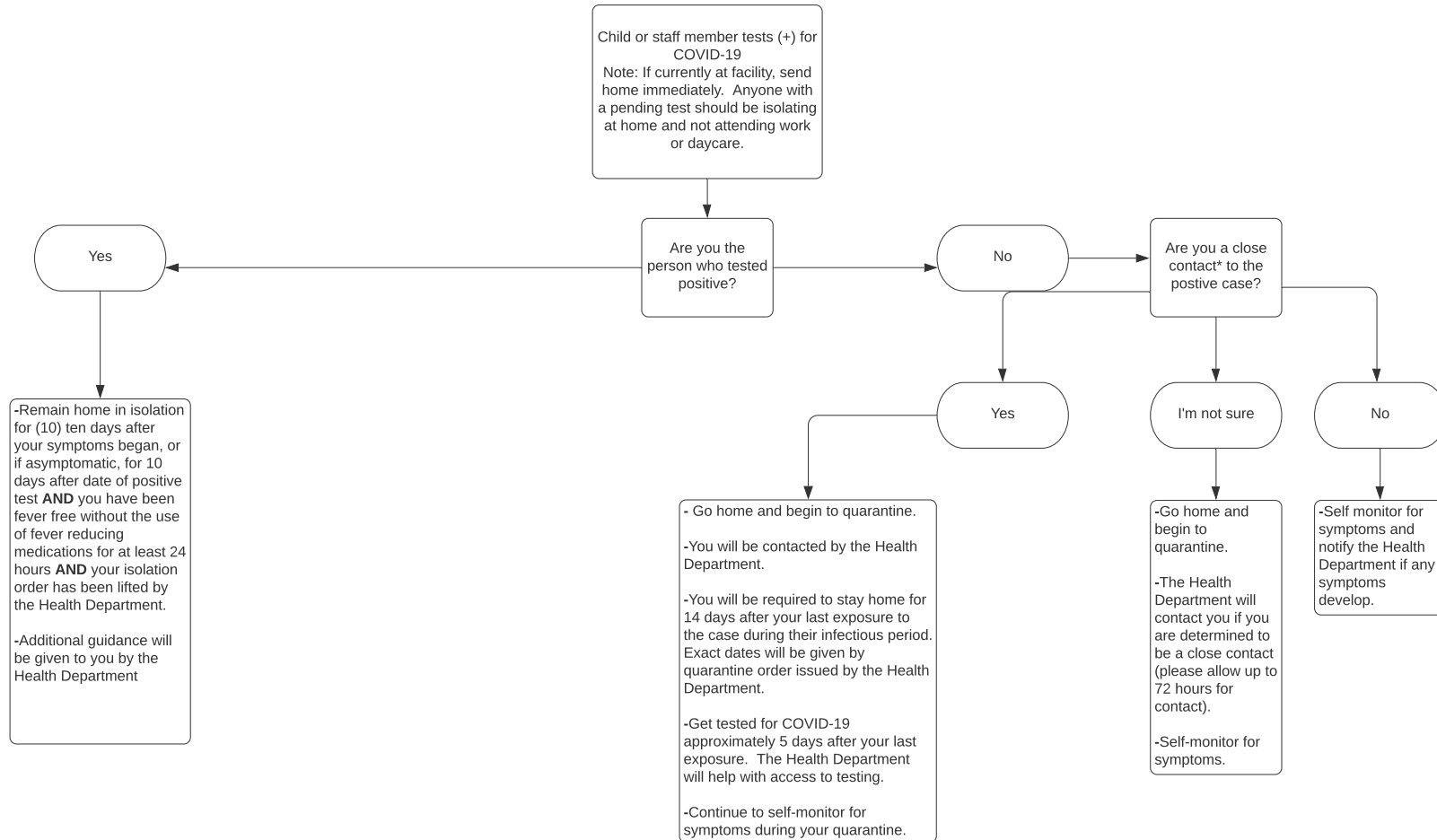


What to do if you test positive for COVID-19 or are a considered a close contact*- Decision Tree



*You may be considered a "close contact" if any of the following statements are true:

- You were within 6 feet of an infected person for more than 15 minutes starting from 2 days before their illness onset (or, for asymptomatic patients, 2 days prior to the positive test result).
- You provided care at home to someone who is sick with COVID-19.
- You had direct physical contact with the infected person (touched, hugged, or kissed them).
- You shared eating or drinking utensils with the infected person.

